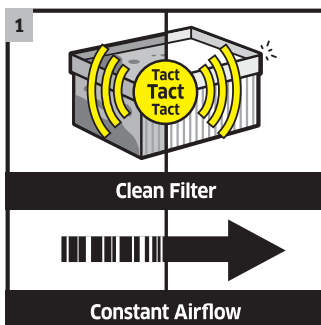




## NT 50/1 Tact Te M

Developed for very large quantities of hazardous fine dusts in dust class M: Large and highly mobile 50/1 Tact Te M wet and dry vacuum cleaner with 50-litre container and adjustable push handle.



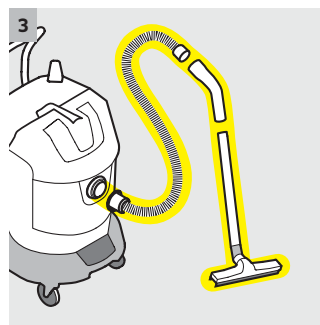
### 1 Fully automatic filter cleaning

- Sensor-controlled electronics for optimal filter cleaning efficiency and therefore maximum suction power.



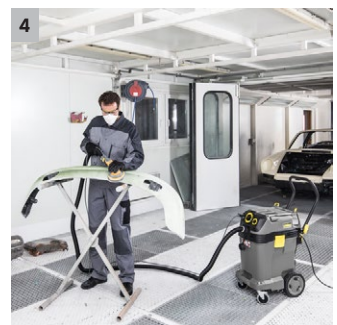
### 2 Tested filtration efficiency of 99.9 per cent

- The removal of almost all fine dust makes for clean, safe workplaces.



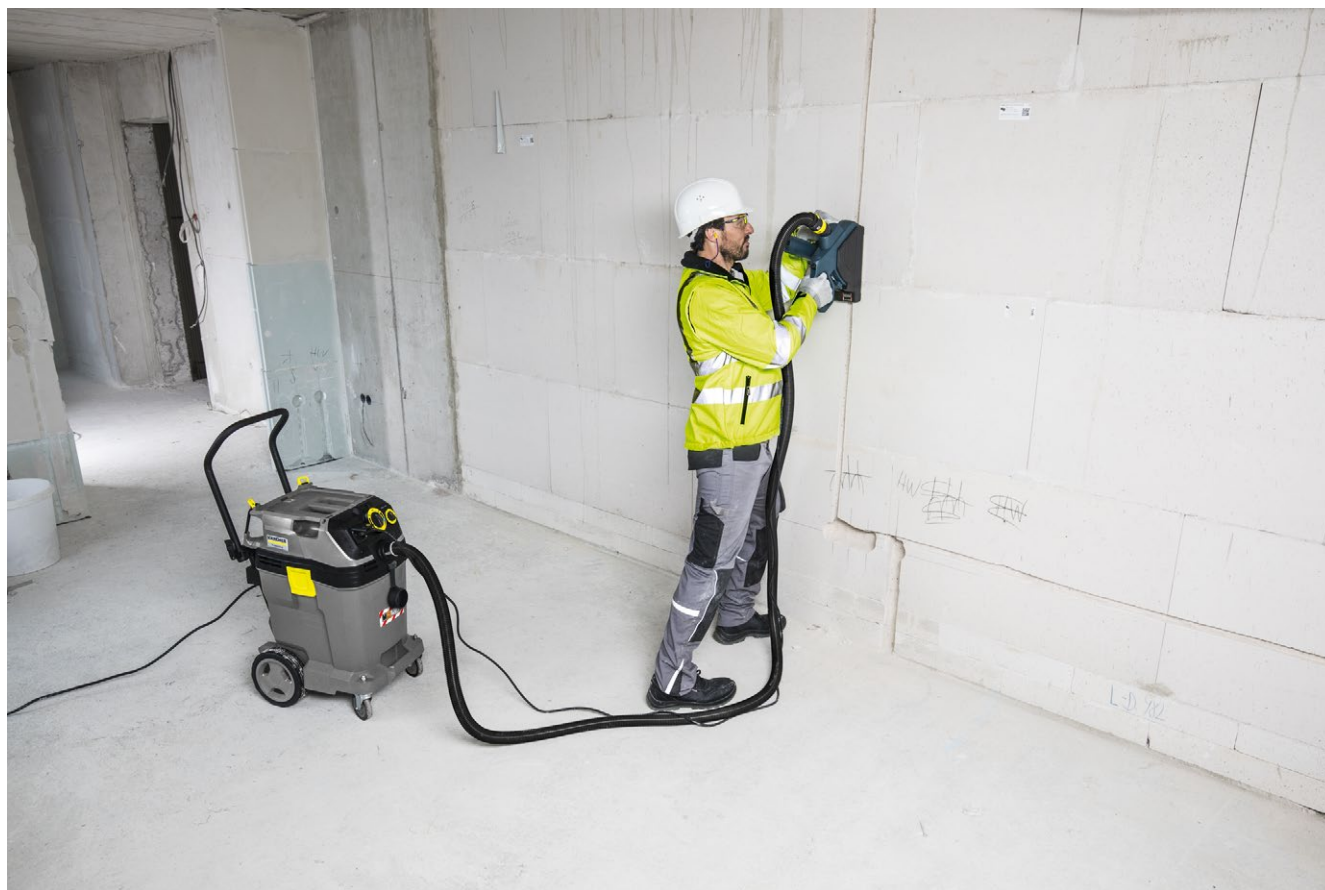
### 3 Complete antistatic system with conductive accessories

- Effective protection against electric shocks through antistatic charging.



### 4 Power outlet with automatic on/off switch

- Te versions are equipped with power outlet, automatic on/off switch and antistatic preparation.



## NT 50/1 Tact Te M

- Complete antistatic system, incl. conductive accessories
- Socket with automatic start-up for electric tools
- Cooling air filtration

### Technical data

Order no.	1.148-435.0	
EAN code	4054278061399	
Current type	Ph / V / Hz	1 / 220 - 240 / 50 - 60
Air flow	l/s	74
Vacuum	mbar / kPa	254 / 25.4
Container capacity	l	50
Max. rated input power	W	1380
Standard nominal width	DN 35	
Sound pressure level	dB(A)	69
Weight	kg	19
Dimensions (L × W × H)	mm	640 × 370 × 1045

### Equipment

Suction hose	m	4 / with bend (electrically conductive)	Push handle	■
Suction tube	piece(s) × m	2 × 0.5 / Stainless steel	Protection class	I
Filter bag		Fleece	Stop swivel castor	■
Wet/dry floor nozzle	mm	360	Filter cleaning	Tact Filter Clean
Crevice nozzle	■		Dust class	M
Power tool connection adapter	■			
Drain hose	■			
Automatic switch-on/off for electric devices	■			
Antistatic system	■			
Flat pleated filter		PES		
Sturdy bumper	■			

■ Included in the scope of supply.

# NT 50/1 TACT TE M

## 1.148-435.0

**KÄRCHER**



		Order no.	Quantity	ID	Length	Width	Price	Description	
<b>Bend, plastic</b>									
Bend Adv, electrically conductive	1	2.889-168.0	1 piece(s)	35				Ergonomic bend for the new clip system. Electrically conductive design. Particularly suited to high concentrations of fine dust.	■
Bend Adv	2	2.889-170.0	1 piece(s)	35				Ergonomic bend for the new clip system.	□
DN 40 bend	3	2.889-171.0	1 piece(s)	40				Bend for the new clip system in nominal size DN 40.	□
Bend, electroconductive, NW40	4	2.889-172.0	1 piece(s)	40				Bend for the new clip system in nominal diameter DN 40. In electrically conductive version. Especially suitable in event of large quantity of fine dust.	□
<b>Floor nozzles</b>									
Wet and dry floor nozzle Adv	5	2.889-152.0	1 piece(s)	35		360 mm		360 mm wide wet and dry floor nozzle with easy-to-change inserts. Including brush strips and squeegees.	■
	6	2.889-153.0	1 piece(s)	40		360 mm		360 mm wide wet and dry floor nozzle with easy-to-change inserts, squeegees.	□
Wet/Dry floor nozzle standard	7	2.889-173.0	1 piece(s)	35		300 mm		300 millimetre width, anthracite coloured wet/dry floor nozzle, NW 35. With easy-to-change inserts. Incl. brush strips and squeegees.	□
Wet/Dry floor nozzle standard DN40	8	2.889-174.0						Standard floor nozzle, anthracite, in nominal diameter 40, with brush strips and squeegees. Suitable for all wet and dry applications.	□
<b>Crevice nozzles</b>									
Crevice nozzle NT Tact DN 35	9	2.889-159.0	1 piece(s)	35	225 mm			Crevice nozzle ID 35, for new Tact range.	■
Crevice nozzle NT Tact DN 40	10	2.889-160.0	1 piece(s)	40	225 mm			Crevice nozzle ID 40, for new Tact range.	□
<b>Suction tubes, stainless steel</b>									
Set suction tube stainless steel NW35 55	11	2.889-192.0	1 piece(s)	35	550 mm			Stainless steel suction tube set (2 × 0.55 m)	■
Set suction tube stainless steel NW40 55	12	2.889-194.0	1 piece(s)	40	550 mm				□
Suction tube	13	6.902-081.0	1 piece(s)	40	0.5 m			Stainless steel suction tube (DN 40, 0.5 m) only suitable for NT vacuum cleaners.	□
<b>Flat pleated filter, PES</b>									
Wet & Dry flat pleated filter	14	6.907-662.0	1 piece(s)					Wet & Dry flat pleated filter made from PES fibre material with a blue label. Suitable for vacuuming liquids, fine dust and coarse dirt from the M and L dust classes.	■
<b>Plastic sacks for dust-free disposal</b>									
Disposal bag PU certified for M and H class	15	2.889-231.0	10 piece(s)					PU plastic bag for dust-free disposal. Pack of 10.	■
<b>Fleece filter bags</b>									
Fleece filter bags	16	2.889-155.0	5 piece(s)					Fleece filter bag with 40-50 litre volume. Tear-resistant, dust class M, for suction hose port in machine head.	■
<b>Rubber suction tools, nose 45°</b>									
Rubber suction tool, nose 45°	17	6.902-104.0	1 piece(s)	35	220 mm			45° rubber suction nozzle (DN 35), oil-resistant and suitable for vacuuming machines. Only for NT vacuum cleaners.	□
	18	6.902-105.0	1 piece(s)	40	220 mm			45° rubber suction nozzle (DN 40), oil-resistant and suitable for vacuuming machines. Only for NT vacuum cleaners.	□
<b>Suction tubes, metal</b>									
Suction tube set, chrome-plated, NW 35 550 mm	19	2.889-191.0	1 piece(s)	35	550 mm			Suction tube set, metal-chrome-plated, NW 35, 2-part, each 0.55 millimetres.	□

■ Included in the scope of supply. □ Available accessories.

# NT 50/1 TACT TE M

## 1.148-435.0

**KÄRCHER**



		Order no.	Quantity	ID	Length	Width	Price	Description	
<b>Other</b>									
Adapter clip new on clip old DN 35	20	2.889-312.0						Adapter for connection of hoses of the new accessory system of dry and wet and dry vacuum cleaners to bends or extension hoses of the old system. For nominal width DN 35.	<input type="checkbox"/>
Adapter connection, electroconductive	21	5.031-436.0						Electroconductive, universal adapter for connecting old NT hoses of nominal widths DN 35, 40, 50 to the new accessory system for wet and dry vacuum cleaners from Kärcher.	<input type="checkbox"/>
Drilling dust nozzle	22	2.679-000.0	1 piece(s)					Drilling dust nozzle for dust-free vacuuming of boreholes. Suitable for dry and wet and dry vacuum cleaners from Kärcher.	<input type="checkbox"/>
<b>Flat pleated filter, PTFE</b>									
Ultimate flat pleated filter	23	6.907-455.0	1 piece(s)					Ultimate flat pleated filter made from PES/PTFE fibre material with a black label. For the toughest applications when vacuuming liquids, fine dust and coarse dirt from dust classes M and L.	<input type="checkbox"/>
<b>Fabric filter</b>									
Wood cartridge filter	24	2.414-000.0	1 piece(s)					Wood cartridge filter made from textile material with PTFE coating and a brown label. For safely vacuuming large quantities of wood and fibre dust from dust classes M and L.	<input type="checkbox"/>
<b>Car cleaning nozzles</b>									
Car nozzle	25	6.906-108.0	1 piece(s)	35		90 mm		Angled, flat, plastic car vacuuming tool with about 90 mm working width. Only for NT vacuum cleaners.	<input type="checkbox"/>

■ Included in the scope of supply. □ Available accessories.

# NT 50/1 TACT TE M

## 1.148-435.0

**KÄRCHER**



		Order no.	Anzahl	Nennweite	Länge	Price	Description	
<b>Complete suction hoses (clip system)</b>								
Electrically conductive suction hose	1	2.889-137.0	1 piece(s)	35	4 m		4 m suction hose with new bayonet and clip fastener. Electrically conductive.	■
Suction hose	2	2.889-135.0	1 piece(s)	35	4 m		4 m suction hose with new bayonet and clip fastener.	□
Electrically conductive suction hose	3	2.889-136.0	1 piece(s)	35	2.5 m		Electrically conductive suction hose with new bayonet and clip fastener. Length: 2.5 m.	□
Suction hose DN 40, length 4 m	4	2.889-138.0	1 piece(s)	40	4 m		4 m long suction hose with new bayonet and clip fastener.	□
Suction hose	5	2.889-139.0	1 piece(s)	40	2.5 m		Suction hose with new bayonet and clip fastener. Length: 2.5 m.	□
Suction hose, oil-resistant	6	2.889-140.0	1 piece(s)	40	4 m		Oil-resistant suction hose with new bayonet and clip fastener. Length: 4 m.	□
Electrically conductive suction hose	7	2.889-141.0	1 piece(s)	40	4 m		4 m long, electrically conductive suction hose with new bayonet and clip fastener.	□
	8	2.889-142.0	1 piece(s)	40	2.5 m		Suction hose, electrically conductive, with new bayonet and clip fastener. 2.5 m long.	□
Suction hose	9	2.889-161.0	1 piece(s)	35	2 m		2 m long suction hose with new clip fastening, DN 35. Ideal for Kärcher dry vacuum cleaners. Robust, flexible and durable.	□
<b>Repair kits</b>								
Repair kit ID 35	10	2.889-149.0	1 piece(s)	35			Repair kit ID 35 for the new clip system.	□
Repair kit ID 40	11	2.889-150.0	1 piece(s)	40			Repair kit ID 40 for the new clip system.	□
<b>Extension hoses (clip system)</b>								
Extension hose	12	2.889-145.0	1 piece(s)	35	2.5 m		Extension hose for new clip system ID 35. Length: 2.5 m.	□
	13	2.889-146.0	1 piece(s)	40	2.5 m		Extension hose for new clip system ID 40. Length: 2.5 m.	□

■ Included in the scope of supply. □ Available accessories.

# NT 50/1 TACT TE M

## 1.148-435.0



		Order no.	Anzahl	Nennweite			Price	Description	
Connection adapter for power tools, clip-on, electrically conductive									
Tool collar DN 35, clip-on	1	2.889-151.0	1 piece(s)	35				Tool adapter with a rubber fixture and airflow control slide for the new clip system. Suitable for all current electric tools.	■
Connection adapter C ID (clip to cone), electrically conductive									
Adapter clip DN 35 on cone DN 35	2	5.407-005.0							<input type="checkbox"/>
Adapter clip DN 40 on cone DN 35	3	5.407-006.0							<input type="checkbox"/>

■ Included in the scope of supply.
 ☐ Available accessories.